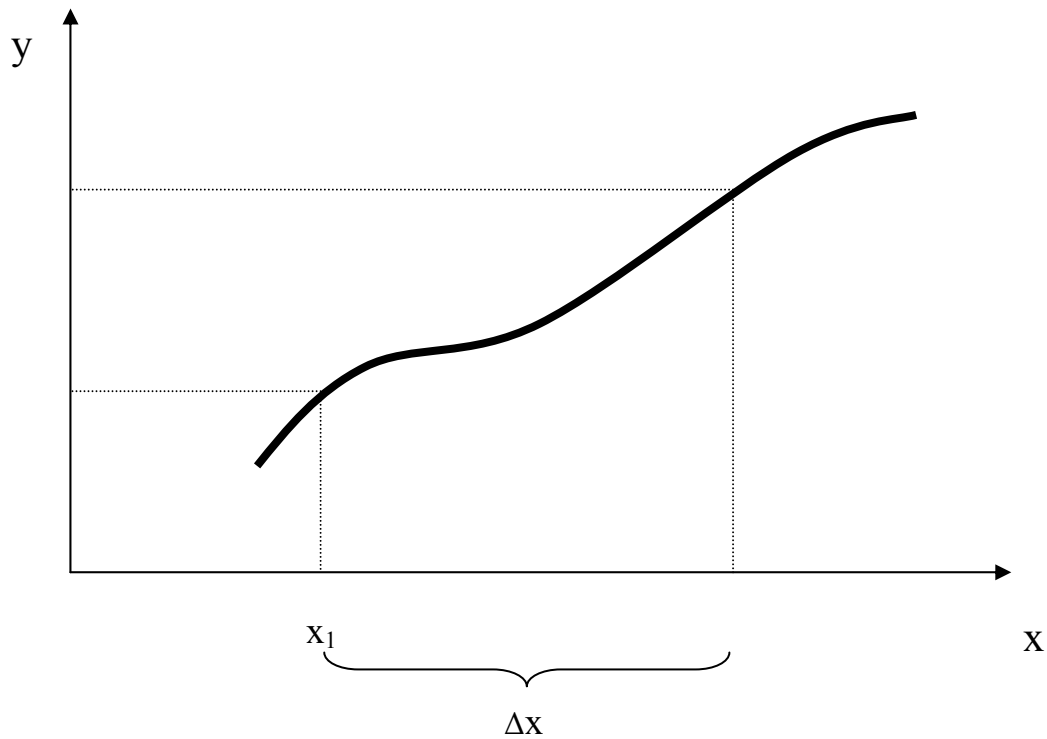


Slope of the Secant



1. Label $x_1 + \Delta x$ on the x-axis.
2. Label $f(x_1)$ and $f(x_1 + \Delta x)$ on the y-axis.
3. Label the points $(x_1, f(x_1))$ and $(x_1 + \Delta x, f(x_1 + \Delta x))$ on the graph.
4. Draw the secant line connecting the points labeled in #3.
5. Write an expression for the slope of this secant line and simplify it.

$m =$ _____